



Glenbeigh

LAURA LYNN CHILDREN'S SUNSHINE HOME LEOPARDSTOWN



This unique project will deliver respite care to terminally ill children and include the very latest in technology and comfort with accommodation for parents who need to stay with their sick child.





Glenbeigh

LAURA LYNN CHILDREN'S SUNSHINE HOME LEOPARDSTOWN



Glenbeigh were required to provide extensive landscaping and a sympathetic environment for these sick children and their families.

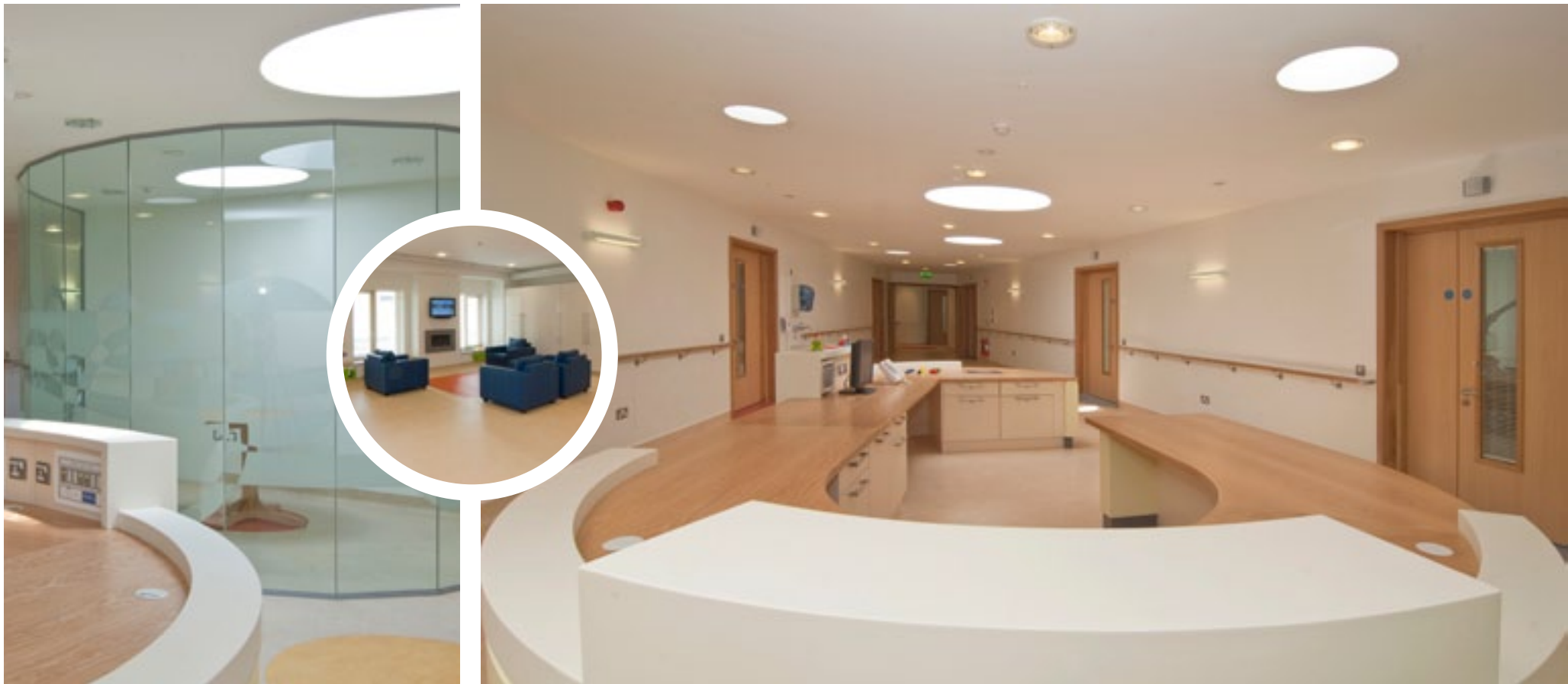






Glenbeigh

LAURA LYNN CHILDREN'S SUNSHINE HOME LEOPARDSTOWN



The challenge for Glenbeigh was to deliver a caring homely and professional environment that would benefit the sick children and their carers and parents at every stage of the child's illness.





Glenbeigh

LAURA LYNN CHILDREN'S SUNSHINE HOME LEOPARDSTOWN



Facilities included the provision of accommodation and catering for parents to stay over with their child.

